

Backup & Recovery

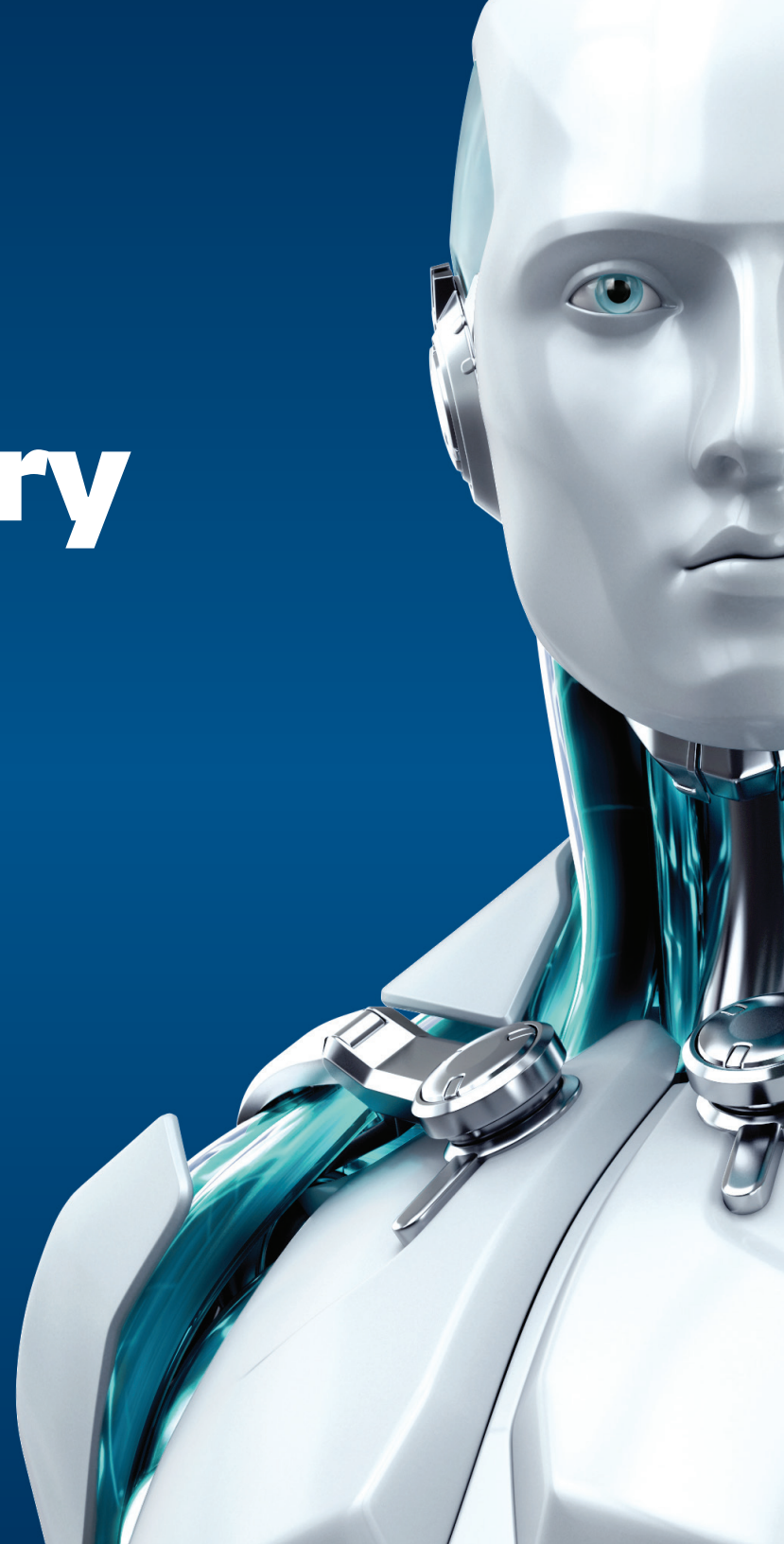


STORAGECRAFT®

Backup Fast, Recover Faster



TECHNOLOGY ALLIANCE



Back up fast, recover faster

Introducing the award-winning data-, applications- and systems-recovery solution for physical and virtual environments. StorageCraft® offers a suite of software and services that helps you recover anytime, anywhere, from any situation. It works as an integral part of your overall business continuity plan by protecting your Windows® systems, applications, and data from any disruption, large or small.

How does the backup work?

The solution creates sector-level backup images of a disk drive. A sector-level backup image is a point-in-time representation of a disk drive and therefore includes not just data but also the operating system, applications, services, and configuration settings. Because your backup image contains everything on a given laptop, desktop or server, when you need to recover its entire hard drive, you can do so in minutes, rather than hours or days.



Back up

Easily create a copy of everything—systems, applications, services, and data.



Manage

Take control of your backups. They'll work when you need them and won't eat up your precious storage space.



Replicate

Access your replicated backups anytime, even if your local versions are destroyed.



Test

Round out your business continuity plan by easily testing your recovery regularly.



Recover

Should anything happen, get your business up and running again—immediately.

StorageCraft Backup & Recovery

StorageCraft ShadowProtect: Feature comparison	Server	Virtual	Small Business	Desktop	GRE
Back up your entire disk drive, including systems, applications, services, configurations, settings, and data	✓	✓	✓	✓	-
Save backups to any disk device or any optical media	✓	✓	✓	✓	-
Test backup images to ensure their integrity	✓	✓	✓	✓	-
Schedule backups to occur automatically	✓	✓	✓	✓	-
Schedule regular incremental backups	✓	✓	✓	✓	-
Recover individual files and folders in minutes	✓	✓	✓	✓	-
Restore a system to different hardware or to virtual environments	✓	✓	✓	✓	-
Swiftly boot up a backup image as a virtual machine	✓	✓	✓	✓	-
Perform a bare metal restore	✓	✓	✓	✓	-
Detect and repair boot configuration errors or corrupt hard drives	✓	✓	✓	✓	-
Migrate a backup image from and to physical and virtual environments	✓	✓	✓	✓	-
Use keywords to search mailboxes, email messages, or entire Exchange databases	-	-	-	-	✓
Recover Exchange emails, attachments, contacts, mailboxes, and more to your production server or to a .pst file	-	-	-	-	✓

StorageCraft ShadowProtect

StorageCraft ShadowProtect® delivers fast and reliable backup and disaster recovery. The offering includes the following versions for various Windows platforms/operating systems.

Featured products

StorageCraft ShadowProtect Server
StorageCraft ShadowProtect Virtual
StorageCraft ShadowProtect for Small Business
StorageCraft ShadowProtect Desktop
StorageCraft ShadowProtect Granular Recovery for Exchange (GRE)

Supported Operating Systems	Server	Virtual ^{***}	Small Business	Desktop	GRE ^{****}
Windows Server 2012 / 2012 R2 / 2008 R2 x64 with and without Hyper-V	✓	✓	-	-	✓
Windows Server 2008 x86/x64 with and without Hyper-V	✓	✓	-	-	-
Windows Server 2003 / 2003 R2 x86/x64	✓	✓	-	-	-
Windows 2000 x86 Server, Advanced Server (Service Pack 4 or Higher)*	✓	✓	-	-	-
Windows Server 2012 / 2012 R2 x64 Essentials, Foundation	-	✓	✓	✓	-
Windows Small Business Server 2011 x64	-	✓	✓	✓	-
Windows Storage Server 2008 R2 x64 Essentials	-	✓	✓	-	-
Windows Server 2008 R2 x64 Foundation**	✓	✓	✓	-	✓
Windows Server 2008 x86/x64 Foundation**	✓	✓	✓	-	-
Windows Small Business Server 2008 / 2003 / 2003 R2 x86/x64	-	✓	✓	-	-
Windows 8 / 8.1 x86/x64	-	✓	-	✓	✓
Windows 7 x86/x64	-	✓	-	✓	✓
Windows Vista x86/x64	-	✓	-	✓	-
Windows XP x86/x64 (Service Pack 2 or Higher)	-	✓	-	✓	-
Windows 2000 x86 Professional (Service Pack 4 or Higher)*	-	✓	-	✓	-

✓ = Limited Support - contact your sales representative for details

* Windows 2000 support: ShadowProtect supports backup of Windows 2000 environments. However, lack of hardware support and suitable device drivers may make recovery difficult. If you use Windows 2000, make sure you have appropriate hardware and drivers you can use as your recovery target should a disaster happen.

** For specific Windows Server 2008 Foundation and R2 Foundation licensing information, please contact your sales representative.

*** ShadowProtect should not be installed directly to the host of a Type 1 hypervisor. The recommended configuration is to back up the guest operating system within each virtual machine.

**** ShadowProtect Granular Recovery for Exchange works with 64-bit versions of Windows 8.1, Windows 8, and Windows 7 only.

StorageCraft Backup & Recovery

StorageCraft ShadowControl

- Detailed, web-based reporting on individual machines or every system in your organization.
- Ability to set specific rules for your particular backup environment.
- Automatic notification in the event of a status change.
- Quick checking to ensure backups are running properly.

StorageCraft ImageManager free tools

Verification

- Verify the integrity of your backup image files and chains to ensure they're in a known good state for fast and reliable recovery.
- Define if and how frequently backup image files are automatically verified.
- Configure verification actions to be the same for all managed folders (of backup images) or configure specific verification actions for each managed folder.
- Manage how computer processing resources are used during verification functions.

Backup image consolidation

- Reduce restoration time, risk of backup file corruption, and needed storage space by automatically consolidating continuous incremental backup image files.
- Consolidate these continuous incremental backup image files into daily, weekly, and monthly files to reduce the length of the backup image chain.
- Roll up multiple monthly consolidated files to further shorten the backup image chain.

Local image replication

- Create redundant copies of backup files that can be easily restored.
- Save backup image copies to a locally attached hard drive.
- Avoid transferring unnecessary or obsolete backup image files.

Retention

- Minimize the storage space your backups use by managing the retention policies for continuous incremental and consolidated backup image files.
- Balance restoration granularity and storage consumption by managing the retention of continuous-incremental and consolidated backup image files.
- Manage backup image file cleanup for all managed folders (of backup images) on a network by setting global retention policies.

Notification and monitoring

- Enable email notification for backup operation failures, warnings, agent inactivity, and diminishing storage space so you know what's going on with your backups.
- Browse a historical record of backup image file creation by date and time to see general information about the file.
- See a managed folder's used and free space as a percentage, in gigabytes, and in a pie chart.

StorageCraft ShadowControl

StorageCraft ShadowControl® is a free tool that allows you to remotely monitor all ShadowProtect backups.

StorageCraft ImageManager

StorageCraft ImageManager™ is free backup management software for IT administrators who use StorageCraft ShadowProtect backup and recovery software. StorageCraft ImageManager provides continual backup image verification and local replication. It's free for all StorageCraft ShadowProtect users, but also contains three premium features/jobs.

StorageCraft Backup & Recovery

ESET Technology Alliance

ESET® Technology Alliance aims to better protect businesses with a range of complementary IT security solutions. We provide customers with a better option when staying protected in the ever-changing security environment by combining our proven and trusted technology with other best-of-breed products.

StorageCraft ImageManager PREMIUM tools

ShadowStream PREMIUM

ShadowStream is technology that accelerates file transfer of your backup images, up to five times faster than traditional FTP.

Take control of problems with network latency and speed up your data transfer with ShadowStream.

You no longer need to worry about transporting large backup files offsite. ShadowStream does it for you—quickly, reliably and securely.

IntelligentFTP PREMIUM

StorageCraft ImageManager takes FTP replication to a new level by introducing flexibility in your replication with intelligent FTP: transfer every ShadowProtect incremental file or just a single, collapsed daily file.

Limit transfer to just the backup image files that have been verified and set retention policies for your source and destination files.

With your intelligent FTP license, you can perform LAN- and WAN-based replication.

HeadStart Restore® PREMIUM

ImageManager gives you a first line of defense in providing business continuity with patented HeadStart Restore technology.

HeadStart Restore lets you recover even before problems arise by prestaging your backup image as a virtual machine.

In the event of a breakdown, HeadStart Restore helps you get your server running again in about 15 minutes.

Stage backups for ultrafast recovery using patented StorageCraft HeadStart Restore.
